

Specifications for Bids

Moorcroft Town Center Out-door Exterior Area Lightning

General Terms:

- a. All Bidders are invited to inspect bid areas before bidding.
- b. Bidder must be a licensed electrical contractor with the State of Wyoming and the Town of Moorcroft
- c. Bidder will furnish liability Insurance and be Bonded for the bid amount ~~or place a 20% Cash Surety with the Town.~~ *Bid Bond of 5% of total Bid in a check, cashier's check or money order.*
- d. Bidders will be responsible for removal and disposal of all materials from old fixtures.
- e. Disposal to be in accordance with all applicable rules and regulations and bidder will hold the Town of Moorcroft harmless for such disposal.
- f. Bidder understands and will comply with all applicable Federal, State, and City Regulations in performance of the bid work.
- g. All Work will be done in a workmanlike manner and meet or exceed the NEC 2017 (National Electric Code NFPA part 70) for electrical installations. Additional wiring shall be no less than #12AWG
- h. The building will be left in a usable state when not actually working on the project.
- i. Bidders will also coordinate with scheduled events and usage to avoid conflicts.
- j. Bidder is responsible for any and all cleaning or repairs directly or indirectly related to the work being performed.
- k. Bid will be binding on the Successful Bidder and they will be responsible to complete the attached scope of work or pay for the completion by another Contractor.
- l. Failure to complete will result in forfeiture of any and all monies due or owing as well as their bond amount.
- m. Bidders acknowledge that they have read and understand these requirements by bidding on the project.

- n. Time to complete shall be with-in 60 days of the awarding of bid extensions will be allowed, by mutual agreement with the governing body by resolution, and shall only be for situations beyond the control of the contractor.

Material Specifications

All Fixtures will be as good or better than Examples in Specifications.

All will be of the same make, specifications, and appearance

Specification for Fixture 1: Example 400 W HPS Equivalent \$94 Amazon

Hykolity 120W 15600lm High-Output LED Wall Pack with Photocell, Brighter Than 400W MH, Dusk to Dawn Outdoor Commercial LED Area Light, 0-10V Dimmable, 5000K...



Specification for Fixture 2: Example 250 W HPS equivalent \$60.00

AmazonHykolity 60W 7800lm High-Output LED Wall Pack with Photocell, 250W MH Equivalent, Dusk to Dawn Outdoor Commercial LED Area Security Light, 1-10V Dimmable, 5000K Daylight, DLC Complied

Proposed Changes and additions:

North Side towards Yellowstone Ave.



Proposed

Additional lighting of Three (3) LED Wall Pack (Specification 2) to light the sidewalk

Specification 2 Total Cost materials \$180.00

West Side Belle Fouche Ave



Replace (4) existing Fixtures with
LED Wall Pack (Specification 2)

Specification 2 Total Cost
materials \$240.00

Additional Lighting

(3) LED Wall Pack (Specification
1) Upper Wall

(1) LED Wall Pack (Specification
2)

Specification 1 and 2 Total Cost
materials \$270.00 + \$60= \$330.00



South Side Gym toward Train Track



Replace One (1) Center Fixture
and Add Two (2) Outer fixtures

3 (LED Wall Pack
(Specification 1)

Specification 1 Total Cost
materials \$270.00

South Side Kitchen Area

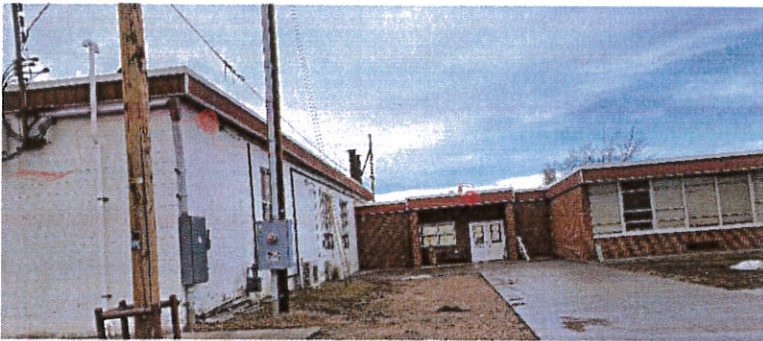


Replace the Two (2)
Existing Fixtures and move
to new location

2 Ea. LED Wall Pack
(Specification 2)

Specification 2 Total Cost
materials \$120

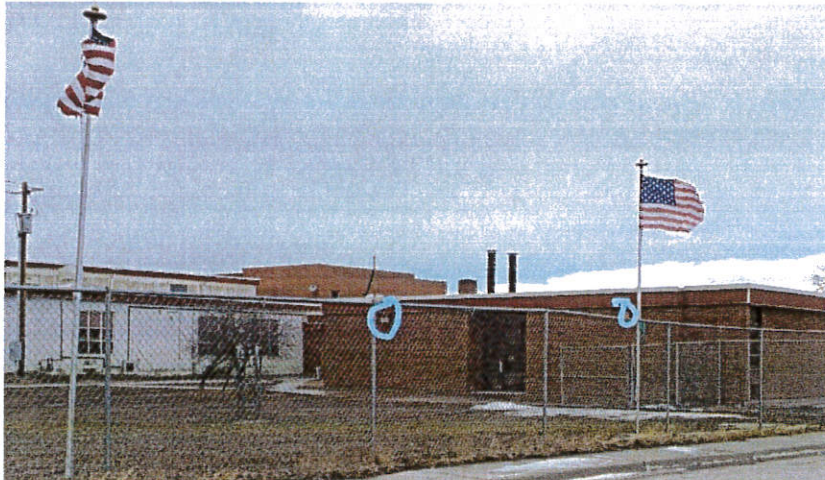
South Side Senior Center Entrance



Additional Lightning LED Wall
Pack (Specification 2)

2 Ea. LED Wall Pack
(Specification 2) \$120.00

South Side Office Entrance



Replace two (2) existing
Fixtures

2 Ea. LED Wall Pack
(Specification 2)

Specification 2 Total Cost
materials \$120.00

East Side Office Towards Little Horn Ave

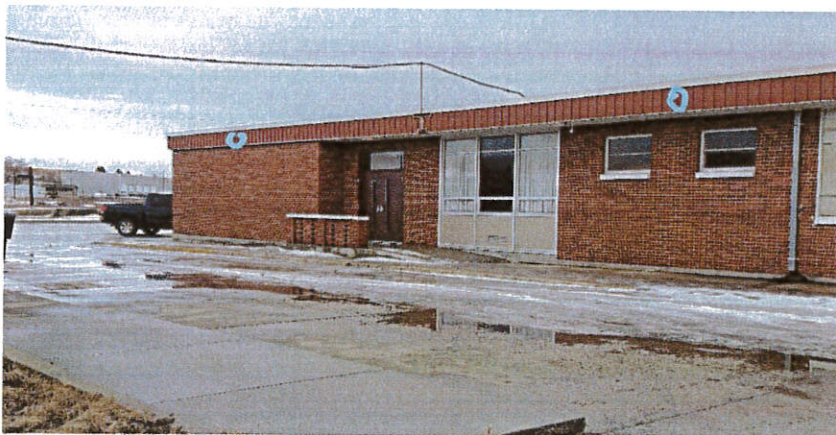


Add two (2) Additional
lights at each Corner of
Building

2 Ea. LED Wall Pack
(Specification 2)

Specification 2 Total Cost
materials \$240.00

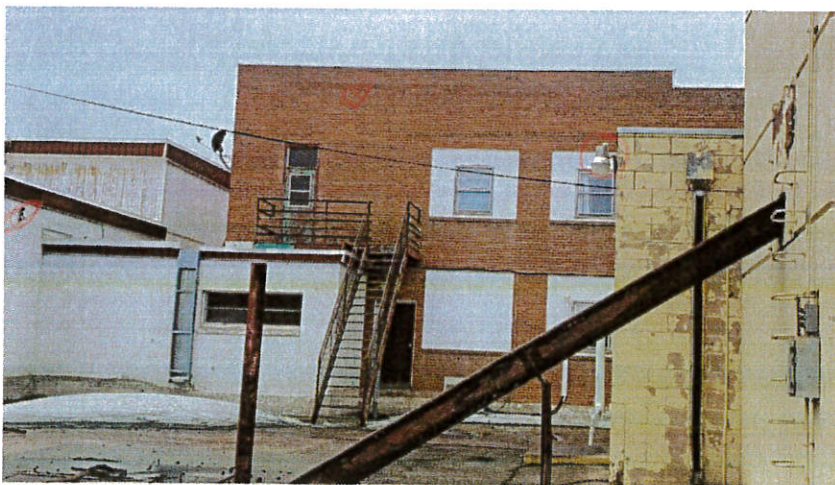
East Side - North Side Office



Add two (2) Additional
lights Building

2 Ea. LED Wall Pack
(Specification 2) \$120.00

Teen Room Area



South Wall Replace (1)
light with LED Wall Pack
(Specification 2) Add One
(1) Light Above Teen
Door Center on Stairs
with LED Wall Pack
(Specification 1) Replace
Yard Light with LED
Wall Pack (Specification

2) Materials Specification 1 and 2 Total Cost \$210

South side Physical Therapy Door



Replace and Move Corner light and add light to West side of Doorway with two (2) LED Wall Pack (Specification 2)

Specification 2 Total Cost materials \$120.00

2



East Side Little Horn Ave

Replace Two (2) Wall Packs

Ea. LED Wall Pack (Specification 2)

Specification 2 Total Cost materials \$120.00

Interior Court Yard



Add Three (3) LED Wall Pack (Specification 2)

Specification 2 Total Cost materials \$180.00